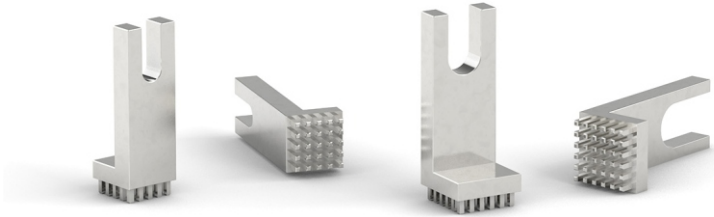




MTCON
NECT
IVITY

POWER EDGE D10,2

ANGLED U-SHAPE,
MASSIVE PRESS-FIT,
PINS ACROSS ENTIRE SURFACE



COMMERCIAL DATA

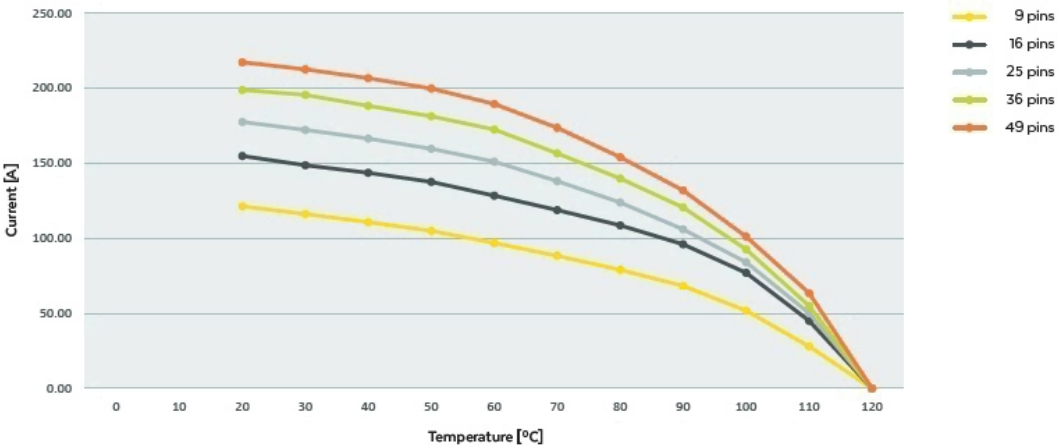
Part number	03.1.0017
Customs tariff number	85369010
Mass	27,73 g
Country of origin	DE (Germany)

TECHNICAL DATA

Current carrying capacity per PIN	ca. 10 A at 20°C / ca. 6 A at 85° C
Current carrying capacity	ca. 360 A at 20°C / ca. 216 A at 85°C
Material	CuZn39Pb3
Surface	tinned

Derating curves are snapshots under test conditions!
Testing was undertaken using two-layer circuit board with 70µm copper.

Derating measurements for Power Line components with pins across entire surface





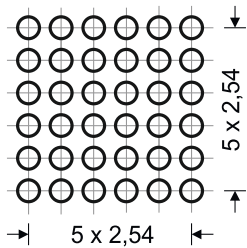
PROCESSING

Torque	-
Press-in force	min. 1440 N, max. 9000 N
Extrusions force	ca. 60 - 80 % the press-in force
Press-in speed	100 - 1000 mm/min

DRILLING HOLE SPECIFICATION

Drilling diameter		1,600 +/- 0,025mm
Final diameter, tin		1,475 +/- 0,05mm
Final diameter HAL surface		1,450 +/- 0,05mm

DRILLING PATTERN



CONFORMITY

RoHS compliant



